

Greenwich Presbyterian Church

Appendix A – Child & Youth Protection Covenant

"I...will tend the flock of God that is in my charge, exercising the oversight...willing, as God would have me do it..." 1 Peter 5:2

I ACCEPT the responsibility to nurture the Christian Faith and well-being of the children and youth (C&Y) of Greenwich Presbyterian Church (GPC) and to care for them as Christ cares for me.

- I. **Policy Statement:** It is the policy of Greenwich Presbyterian Church that:
- A. All who arrive on our campus or participate in our programs, particularly our children and youth (C&Y), shall be treated in a loving and caring manner, as our Lord would desire.
 - B. All who arrive on our campus or participate in our programs shall respect healthy boundaries in their interactions, particularly with C&Y.
 - C. GPC shall comply with the laws of the Commonwealth of Virginia regarding C&Y entrusted to its care and reporting instances of abuse.
 - D. Prior to working with our C&Y, those entrusted with their care of shall be vetted and approved for their roles in accordance with the procedures established in this document.
 - E. The staff, volunteers, associates, and others involved with, as well as our C&Y participating in, GPC's C&Y activities shall conduct themselves in accordance with the Healthy Boundaries Expectations listed in this document.
 - F. Reasonable precautions shall be taken to ensure staff, volunteers, associates, and others involved with C&Y programs are not put in a position where unwarranted or false charges are made against them.
- II. **Healthy Boundaries Expectations:** All who participate in GPC-sponsored C&Y programs or activities shall:
- A. Ensure that one-on-one interactions between an adult and C/Y are observed and known to another adult (parent or leader/teacher, etc.).
 - B. Utilize common expressions of affection (hugs), affirmation (pats on the back), support (prayers), or physical caretaking (changing diapers, toileting, first aid, etc.) as appropriate in this community of caring Christians. Care must be taken that expressions of affection are not excessive or imposed upon another individual when unwanted.
 - C. Make healthy choices concerning common vices prevalent in our society which are incongruent with Christian character and obedience; (i.e., shall not display, have possession of, or use obscene/pornographic material or illegal/un-prescribed drugs and shall not be under the influence of, or impaired by any substance while participating in GPC C&Y programs).
 - D. Use clean and caring language while engaged in program activities; (i.e., not use profanity, other inappropriate language, or inappropriate jokes in the presence of C&Y).
 - E. Maintain a healthy element of privacy concerning an individual's (primarily adult's) personal life; (i.e., not sharing inappropriate personal details or asking another to share inappropriate details of his/her personal life through any form of communication including verbal, written, or electronic).
 - F. Keep private any confidential information about anyone, or their family, participating in GPC C&Y programs unless the information leads to reasonable suspicion that a Boundary Crossing Event or Incident of Abuse has taken place, an individual may harm him/herself or others, or if compelled by law.
 - G. Participate in the appropriate training prescribed by this policy.

I acknowledge I HAVE READ and UNDERSTAND the policy, healthy boundaries expectations, and incident reporting procedures (see reverse side) of the CYVA Program at GPC. I AGREE TO ABIDE BY them and to submit to the authority of the Session regarding this policy.

Signature

Printed Name

Date

Greenwich Presbyterian Church

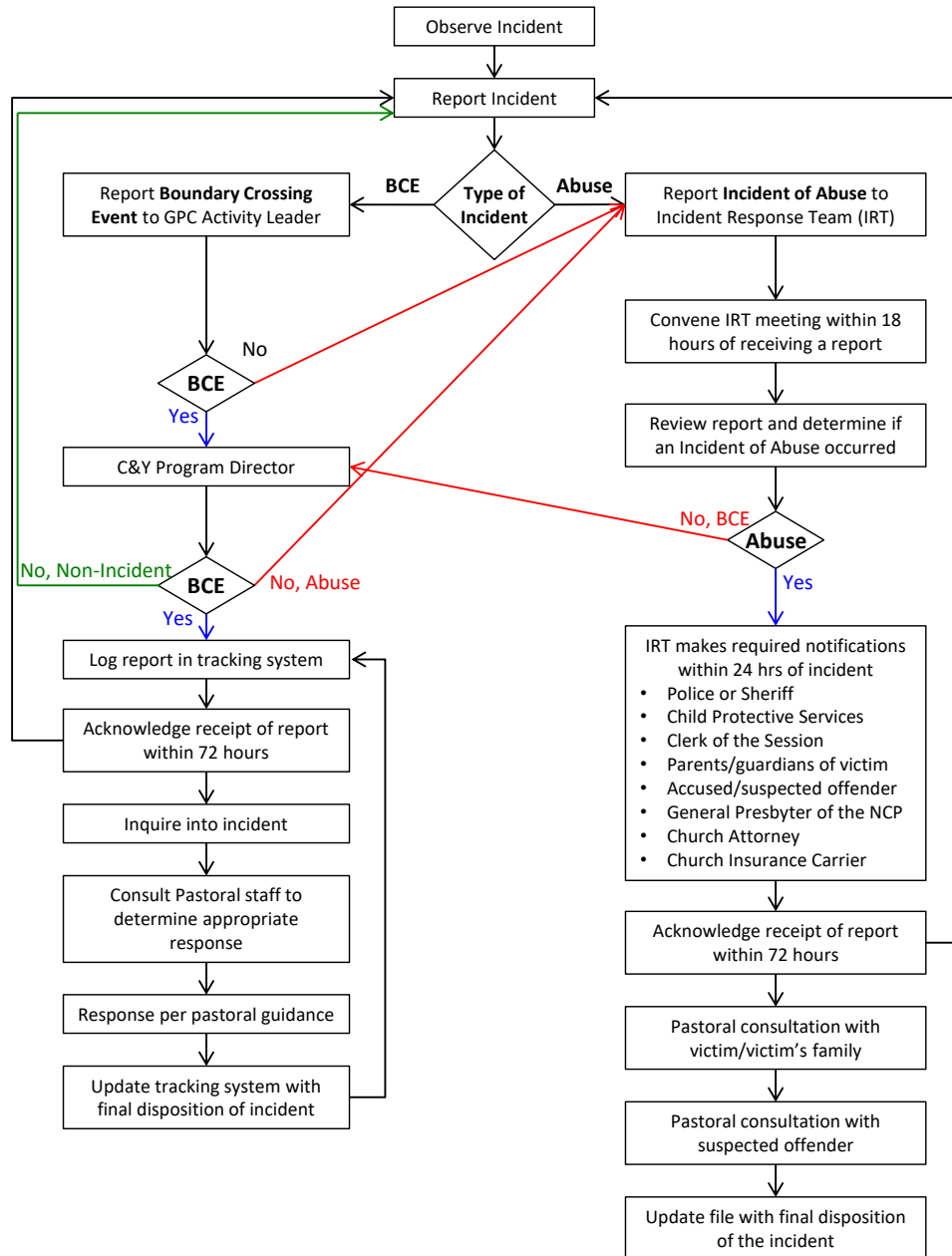
Appendix A – Child & Youth Protection Covenant

A. Boundary Crossing Events (BCE)

Reasonable suspicion of a Boundary Crossing Event shall be reported as soon as possible to the GPC Activity Leader (Sunday School Teacher, Youth Leader, Staff Member, etc.) responsible for the activity or event. The report may be made orally or in writing.

B. Incidents of Abuse

Reasonable suspicion of an Incident of Abuse shall be reported immediately to the Pastor, Clerk of the Session, or an Elder on the Incident Response Team. The report may initially be made orally or in writing. If the report was initially made orally the Incident Response Team shall follow up with the reporter to obtain a formal written report.



Current Contact Information for Incident Reporting

Children & Youth Program Director: Associate Pastor Eric Beckman, 703-209-7125
 Incident Response Team Primary Contacts: Elder Sam Snow, 703-625-0805
 Pastor Don Meeks, 703-402-7724

Questions, Comments, or Concerns? IncidentResponseTeam@greenwichpres.org